

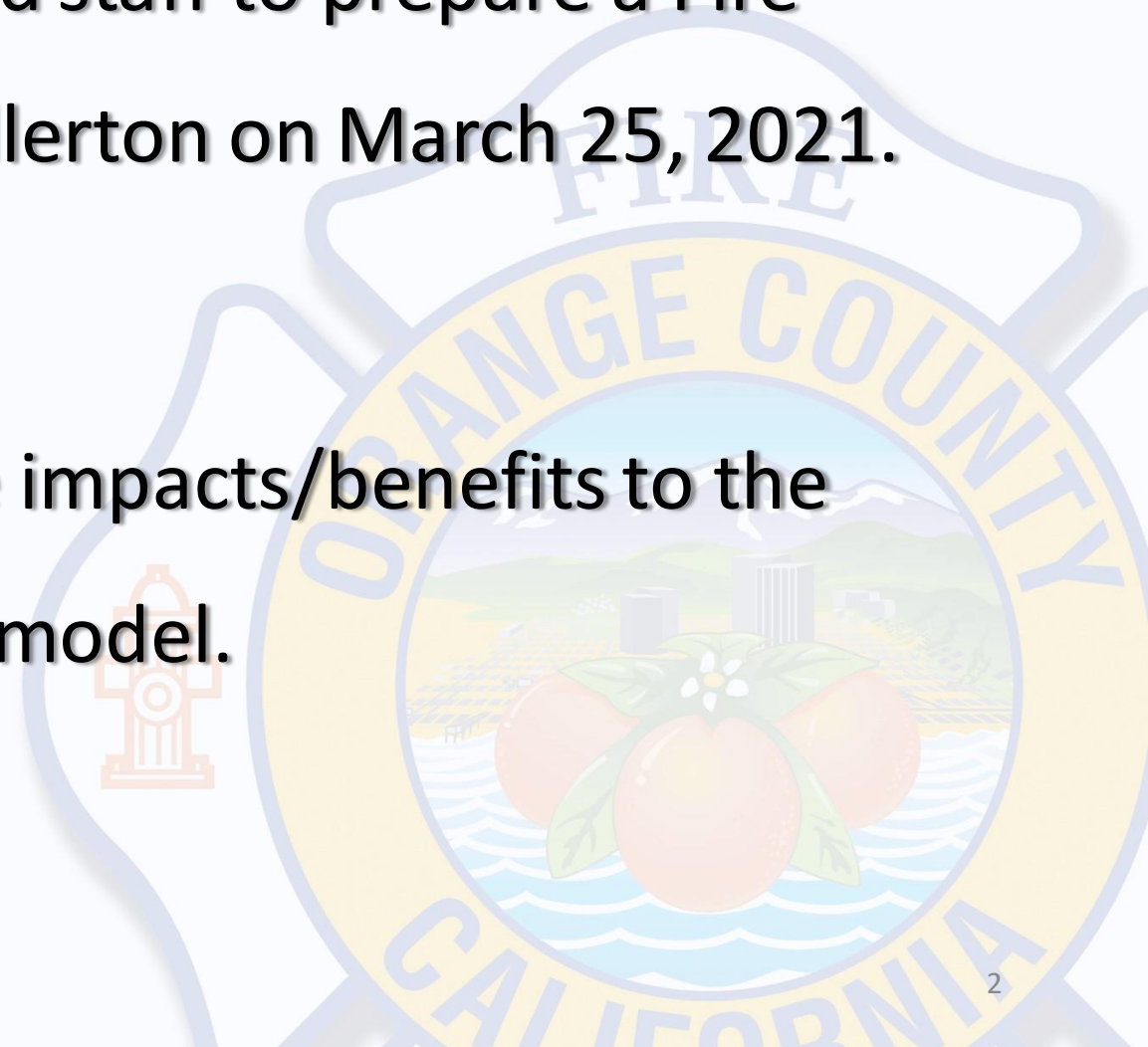
Fullerton Fire Service Proposal

October 13, 2021

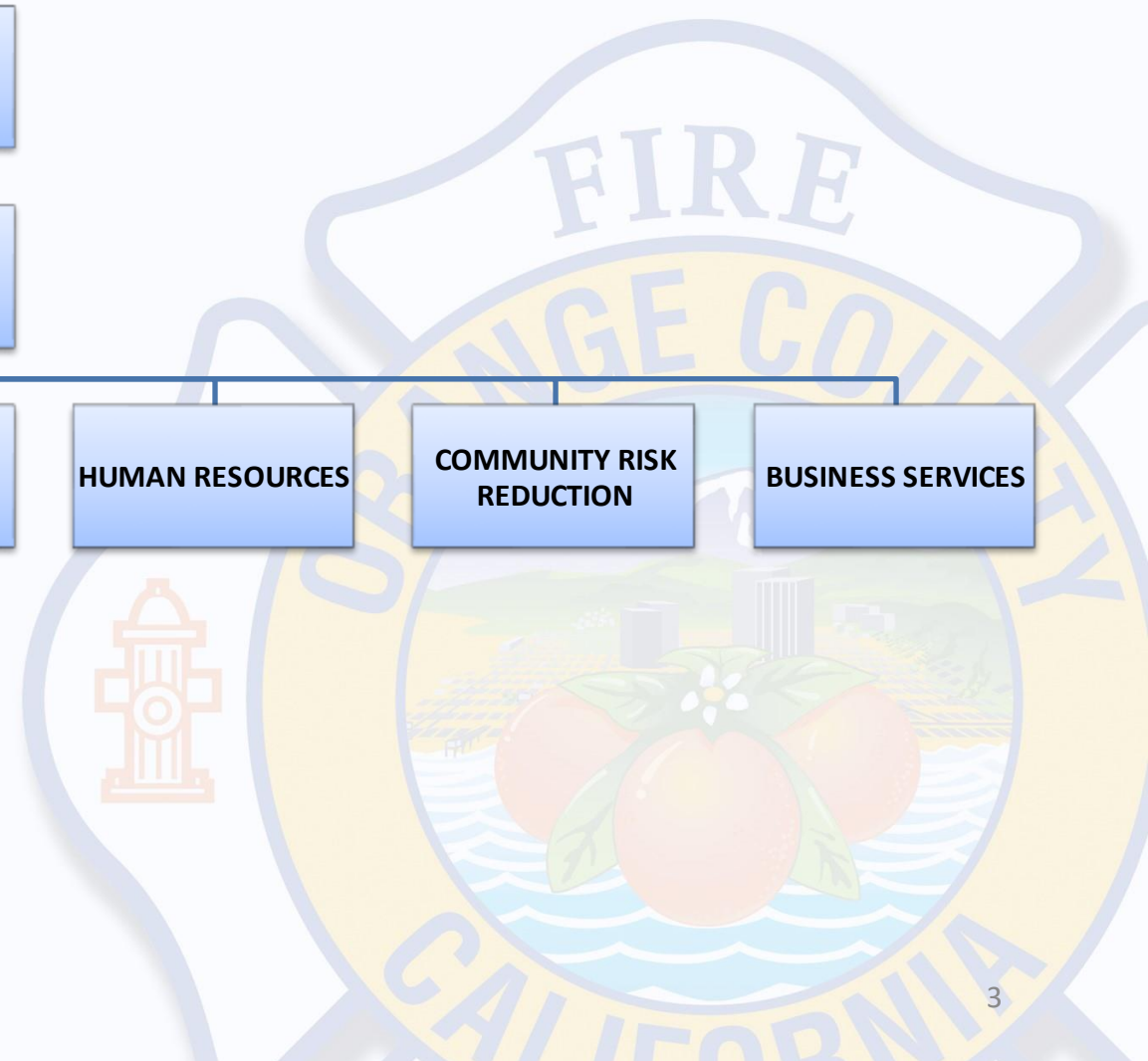
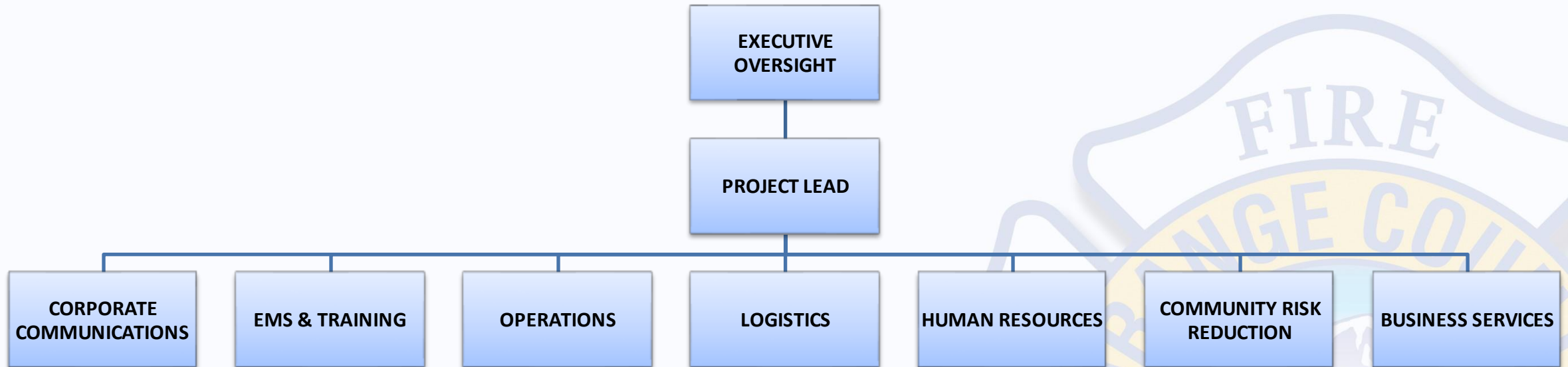


Fullerton Fire Service Proposal

- OCFA Board of Directors authorized staff to prepare a Fire Service Proposal for the City of Fullerton on March 25, 2021.
- A team was built to determine the impacts/benefits to the OCFA and establish a deployment model.



Fullerton Fire Service Proposal



Fullerton Fire Department

- Fullerton Fire Department was established in 1908
- Command Staff of 9 shared with Brea Fire Department
- Fire Stations – 6
- Annual incidents – 14,000
- Personnel
 - 72 sworn firefighters
 - 4 fire prevention staff
 - 4 professional staff



City Jurisdiction Fullerton

- OCFA Division and Battalion Stations
- OCFA Division Stations
- OCFA Battalion Stations
- OCFA Fire Stations
- Fullerton Fire Stations

- Highways
- Major Roads
- County Boundary
- OCFA Service Area
- Non OCFA Service Area
- City of Fullerton



Information Technology Division - Geographic Information Systems

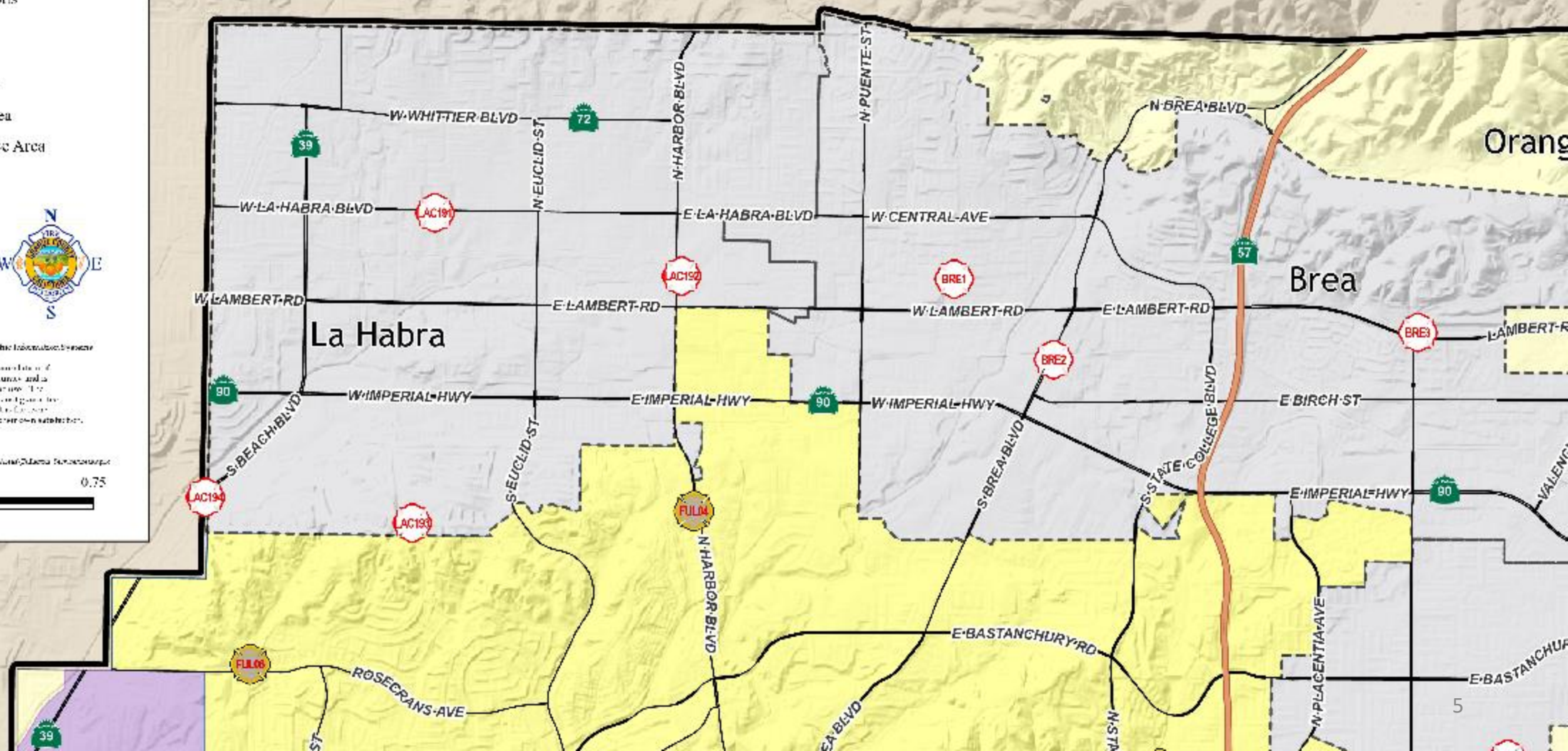
Information in this map was compiled from a variety of data from various sources and is provided as a reference only. The Orange County Fire Authority is not responsible for any errors or omissions in this map. The user assumes all responsibility for any use of information in this map.

6/21/2021

© 2021 Orange County Fire Authority. All Rights Reserved. No part of this map may be reproduced without written permission.



Los Angeles
County



Benefits to OCFA

- Cost neutral to the existing partner cities
- Greatly improves regional delivery system for:
 - Yorba Linda
 - Buena Park
 - La Palma



OCFA Service Area Without Fullerton

-  OCFA Division and Battalion Stations
-  OCFA Division Stations
-  OCFA Battalion Stations
-  OCFA Fire Stations
-  Fullerton Fire Stations
-  Highways
-  Major Roads
-  County Boundary
-  OCFA Service Area
-  Non OCFA Service Area
-  City Jurisdictions

Source:
Map data: Google Maps
OCFA Service Area: OCFA
Non OCFA Service Area: Non OCFA
City Jurisdictions: City Jurisdictions

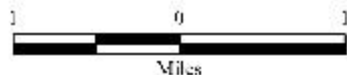


Information for a map of the OCFA Service Area is provided for informational purposes only.

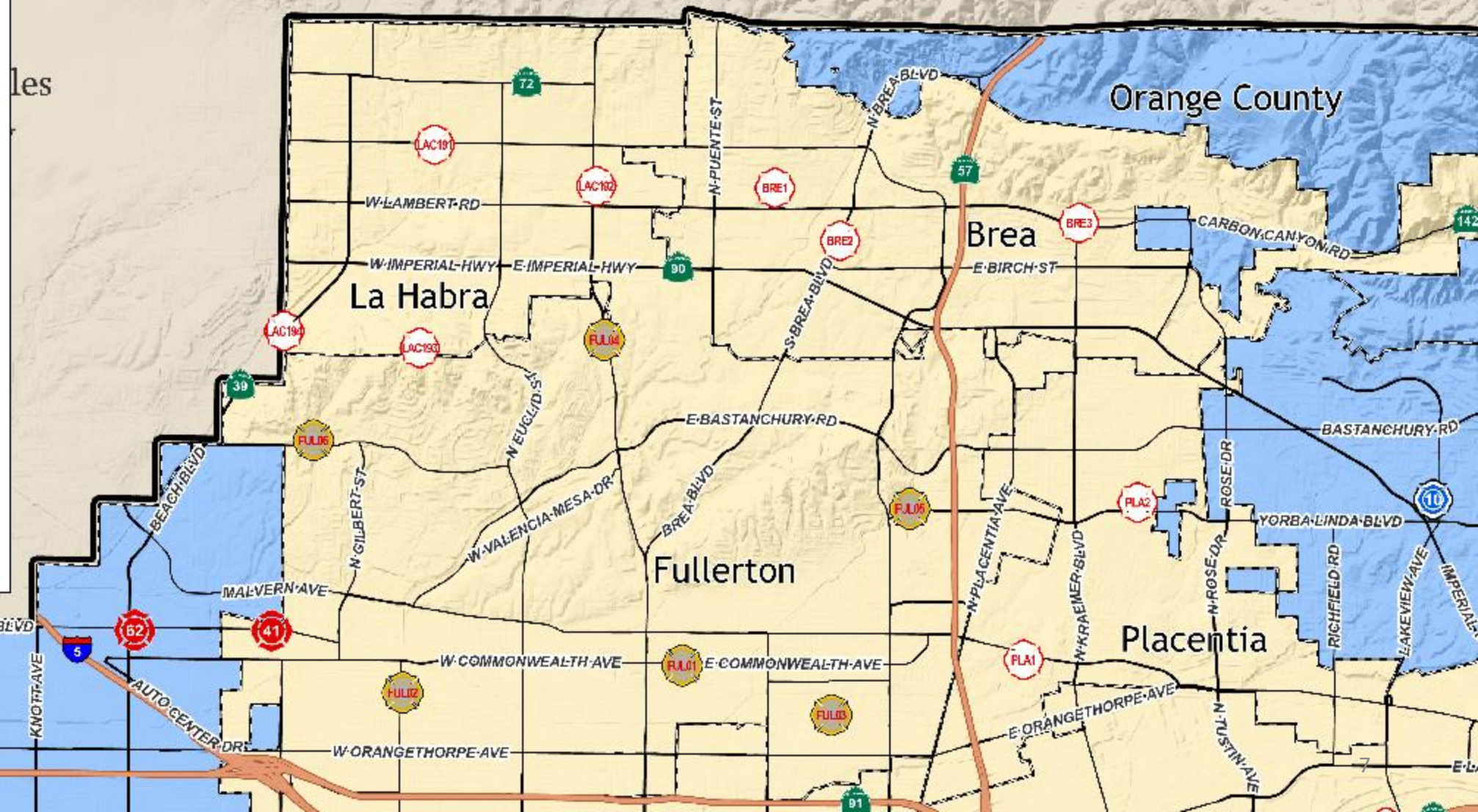
Information for a map of the OCFA Service Area is provided for informational purposes only. The Orange County Fire Authority does not warrant the accuracy or completeness of the information provided on this map.

4/22/2024

OCFA Service Area: OCFA Service Area



les



OCFA Service Area *With Fullerton*

-  OCFA Division and Battalion Stations
 OCFA Division Stations
 OCFA Battalion Stations
 OCFA Fire Stations
 Fullerton Fire Stations
 Highways
 Major Roads
 County Boundary
 OCFA Service Area
 Non OCFA Service Area
 City Jurisdictions



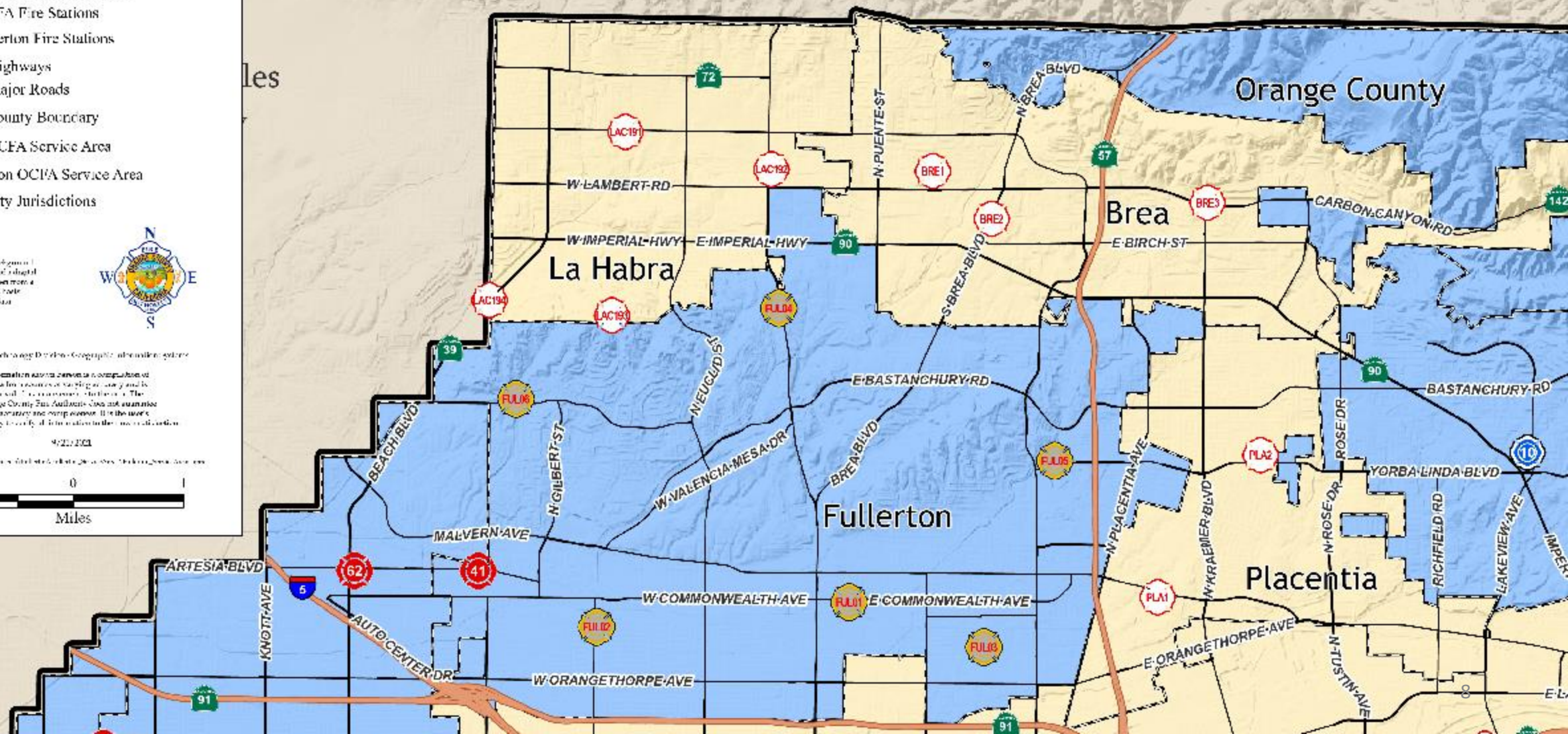
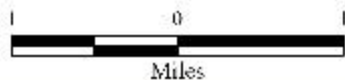
Source:
The authors published a paper in 1997 in which they described a digital signature model taken from a federal system that had been adopted, given that

also called: Tech 2 and D-Video; 5.25mm; also called: syzygy

information system, however, a compilation of data from sources of varying reliability and is not for management decision use. The Orange County Tax Auditors does not guarantee its accuracy and completeness. If the user is not satisfied, it is the user's responsibility to obtain additional information.

4:23:19

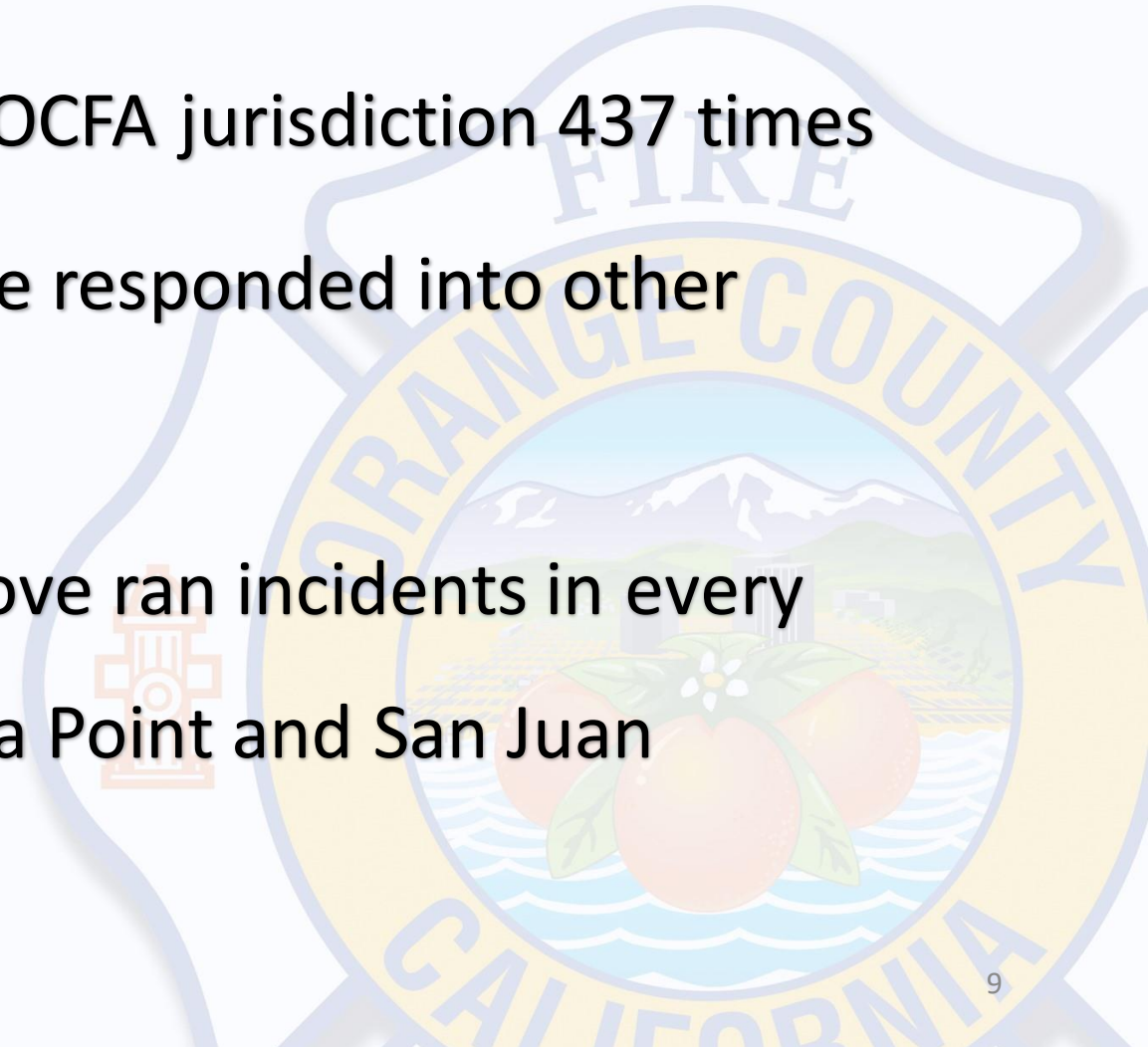
© 2006 Blackwell Publishing Ltd *Journal of Internal Medicine* 260: 385–392



Benefits to OCFA

Benefit of direct control of resources

- 2018 – Garden Grove sent units into OCFA jurisdiction 437 times
- 2020 – OCFA units from Garden Grove responded into other member cities 1,458 times
- In 2020, units assigned to Garden Grove ran incidents in every member city except Lake Forest, Dana Point and San Juan

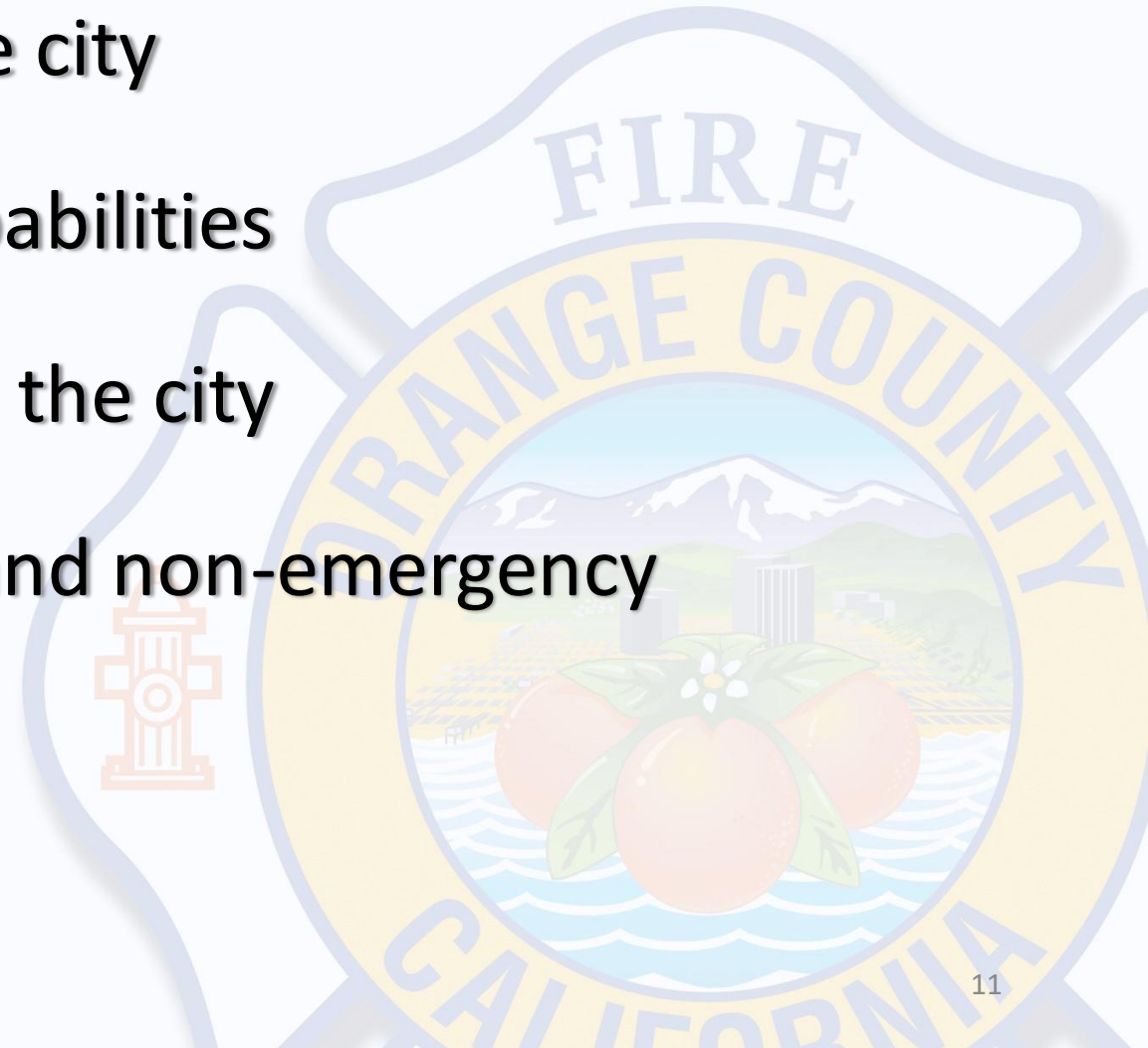


Benefits to OCFA

- Economies of scale:
 - Financial contribution enables OCFA to enhance support staff in areas that we may have been unable to augment prior.
 - No increase to existing cash contract city charges, nor require funding by the SFF cities.
- Access to a live fire training tower for regional use.
- Increased command and control response to state contract area off the 57 Fwy.

Benefits to Fullerton

- Reduced cost for fire service to the city
- Increased in ALS response and capabilities
- Improved ladder truck coverage in the city
- Use of OCFA regional emergency and non-emergency resources



Deployment Comparison

OCFA Proposal comparison with current Fullerton deployment

| | Station 1 | Station 2 | Station 3 | Station 4 | Station 5 | Station 6 | Daily Staffing | Daily Medics |
|------------------------------|-----------|-----------|-----------|-----------|-----------|-----------|----------------|--------------|
| Fullerton Current Deployment | PME/BC | PME | PME | PME | PME | BLS Truck | 25 | 10 |
| OCFA Deployment | PME/BC | PME | PMT | PME | PME | PMT | 25 | 12 |

1. PME = Paramedic Engine, PMT = Paramedic Truck
2. Indicates conversion to **ALS** capability
3. Indicates the conversion to **Paramedic Truck**

Contract Cost to Fullerton

| | OCFA Costs (A) | Fullerton Fire Department Budgeted Costs (B) |
|----------------------------------|----------------|---|
| Service Charge | \$21,137,238 | \$27,307,520 |
| Facilities Maintenance | \$90,000 | |
| Vehicle Replacement/Depreciation | \$282,752 | |
| Total | \$21,509,990 | \$27,307,520 |
| Total Savings (B-A) | \$5,797,530 | |

Excludes one-time startup costs and City's Annual UAAL Payment to PERS.

Service charges include employee salaries, pension, sick, vacation and overtime. Services and supplies from printing to vehicle parts. Administrations and support services from community education to board member costs.

Contract Cost to Fullerton

OCFA

| | 2021/22 | 2022/23 | 2023/24 | 2024/25 |
|-----------------------|--------------|--------------|--------------|--------------|
| OCFA Service Charge | \$21,509,990 | \$22,477,939 | \$23,489,447 | \$24,546,472 |
| OCFA % Inc. (Maximum) | | 4.50% | 4.50% | 4.50% |
| Fullerton FD Budget | \$27,307,520 | \$29,183,547 | \$31,188,456 | \$33,331,103 |
| % Increase | 8.26% | 6.87% | 6.87% | 6.87% |
| Annual Savings | \$5,797,530 | \$6,705,607 | \$7,699,010 | \$8,784,632 |
| Cumulative Savings | \$28,986,779 | | | |

Note: Ex

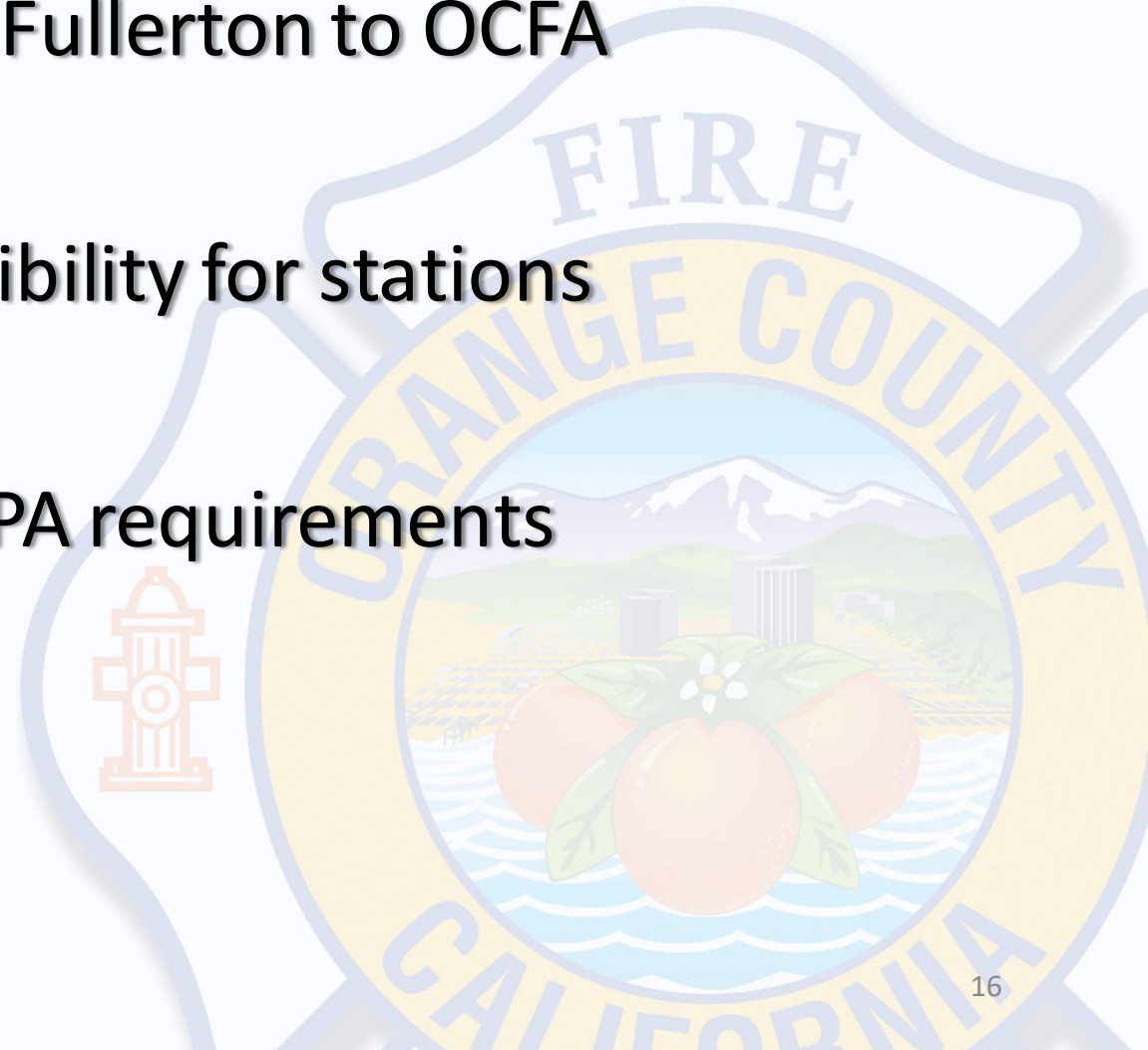
Fullerton Start Up Cost

| Based on 75 Sworn Personnel | | |
|------------------------------|---|--|
| Comm/IT \$404,650 | Station Alarms Station Phones (Office & Fax) Tablets for engines/Trucks Radios (Stations & Mobile) Pagers OCFA Computer Programs | Station Network Station Computers Printers/Copiers Radio Pacset Mobile Data Computers Vehicle Tech Upgrades |
| Facilities \$152,700 | Station Locks | Safety on Gates |
| Personnel Costs \$167,880 | Physicals Insurance (Risk Management) | Livescan Onboarding |
| Service Center \$394,080 | Helmet Shields Station Equipment Brush Helmets Wildland Personal Protective Equipment Fire Shelters Wildland T-Shirts | Goggles Rain Gear Apparatus Complement Uniforms Dress Uniforms Apparatus Decaling |
| Fleet Services \$114,520 | Apparatus Repairs | |
| EMS \$172,027 | EMS Equipment | Standardize Equipment |
| Total Start-up Costs: | | \$1,405,857 |



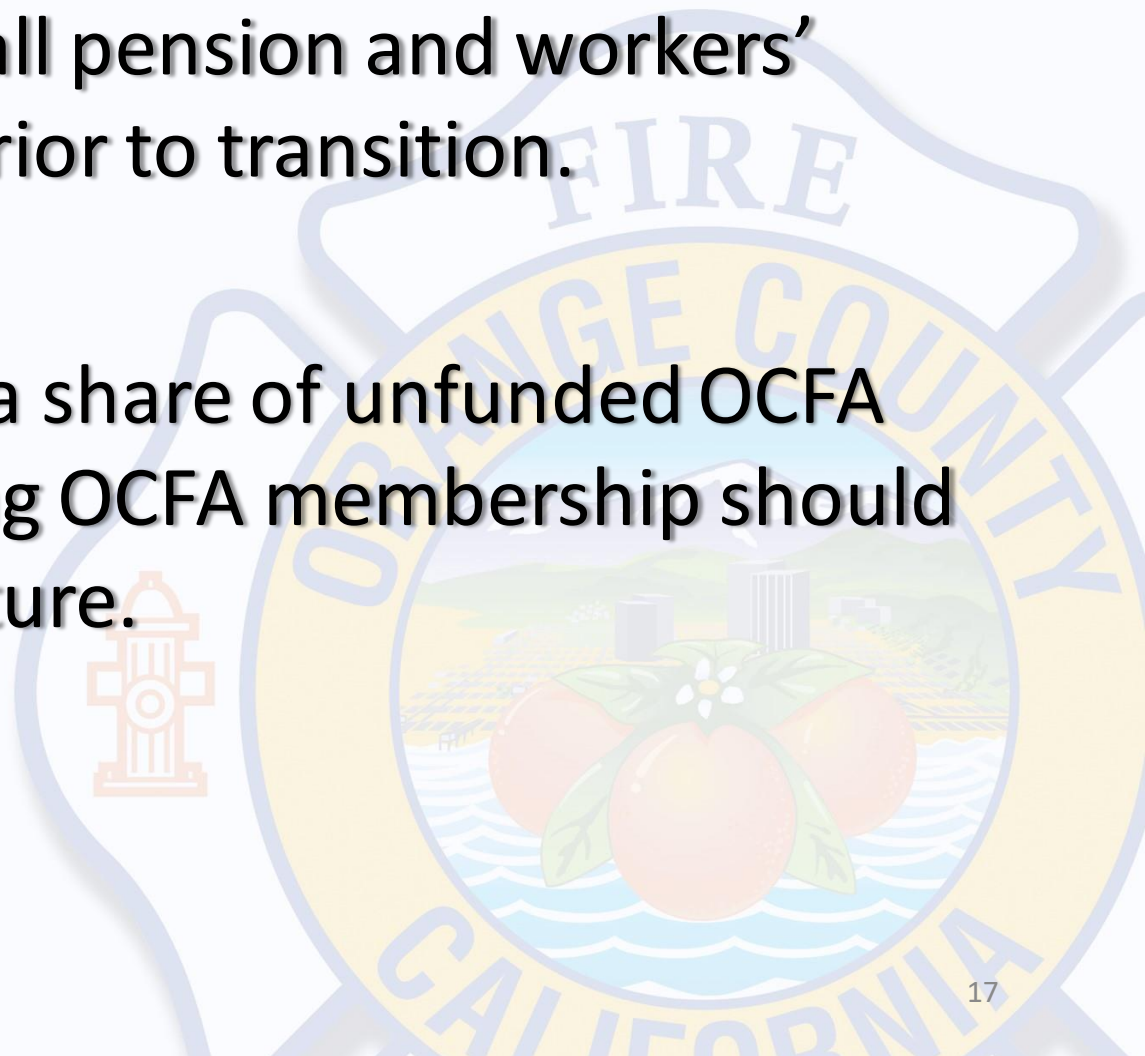
Apparatus, Stations & Equipment

- Proposal transitions vehicles from Fullerton to OCFA
- City maintains ownership/responsibility for stations
- Proposed terms are aligned with JPA requirements



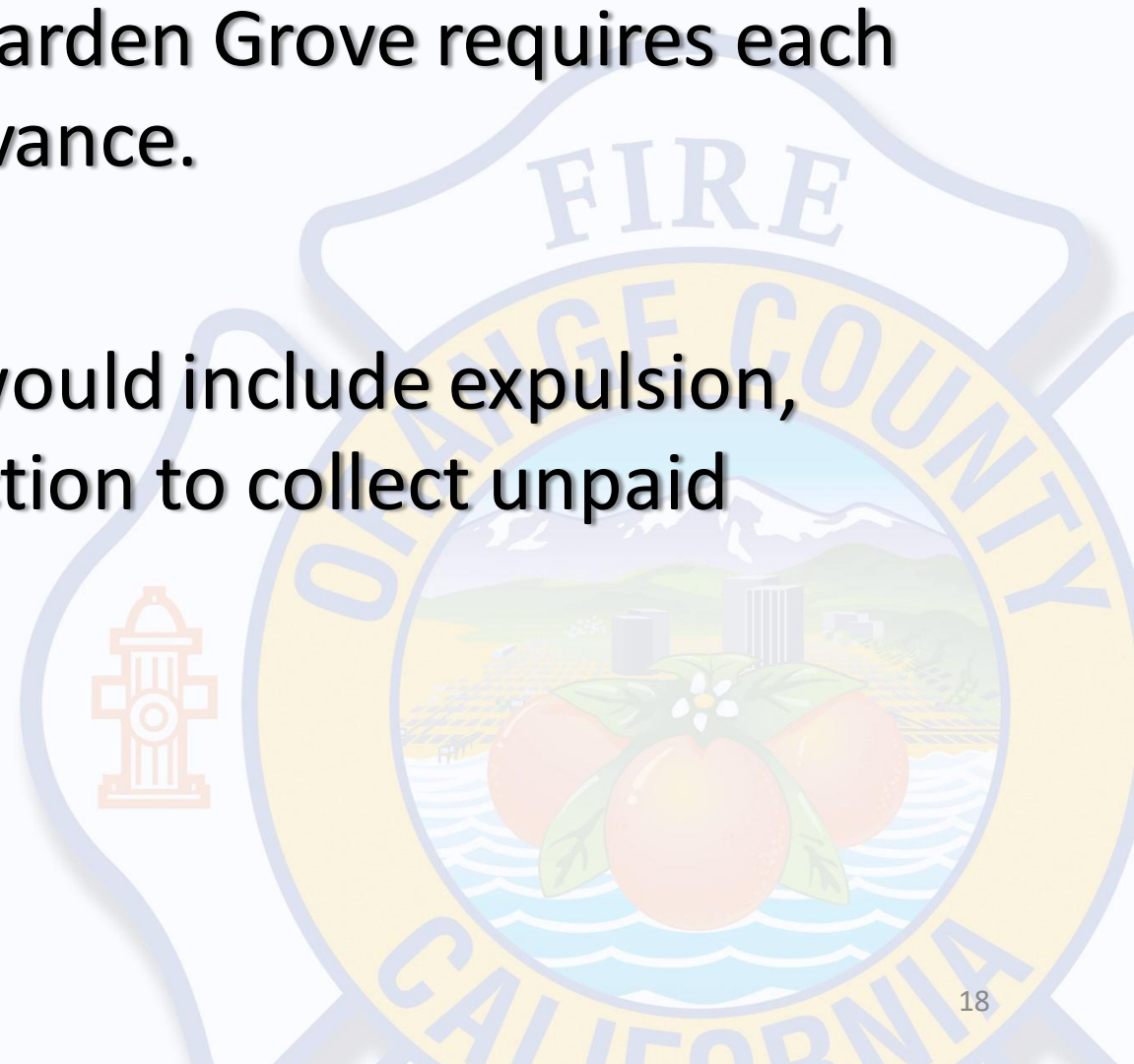
OCFA JPA Safeguards

- Fullerton remains responsible for all pension and workers' compensation liabilities accrued prior to transition.
- City will be responsible for pro-rata share of unfunded OCFA pension liability that accrues during OCFA membership should they choose to withdraw in the future.



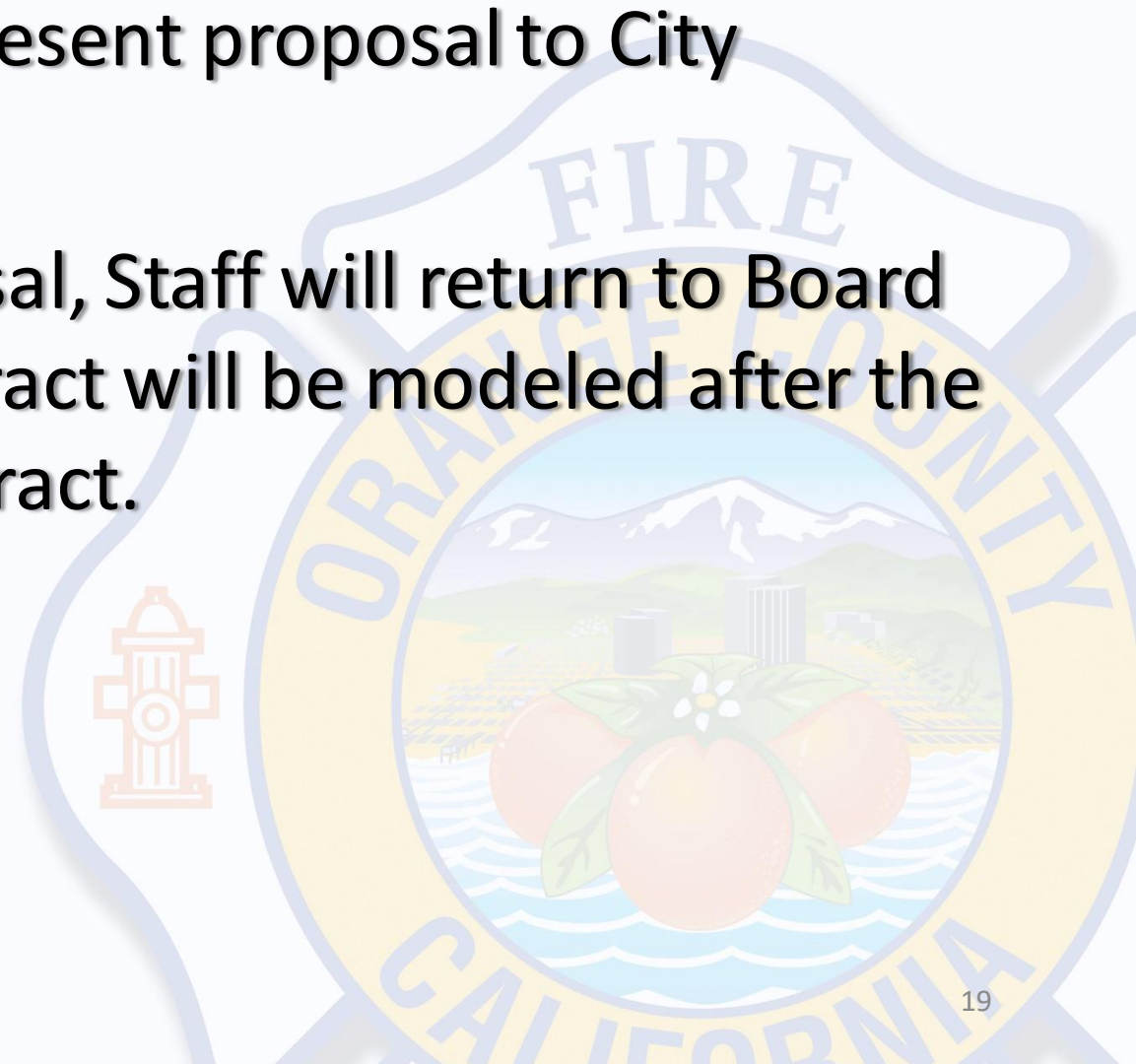
OCFA JPA Safeguards

- Agreements with Santa Ana and Garden Grove requires each city to pay OCFA for services in advance.
- OCFA's options for non-payment would include expulsion, imposition of a late fee, or legal action to collect unpaid amounts.



Recommendation

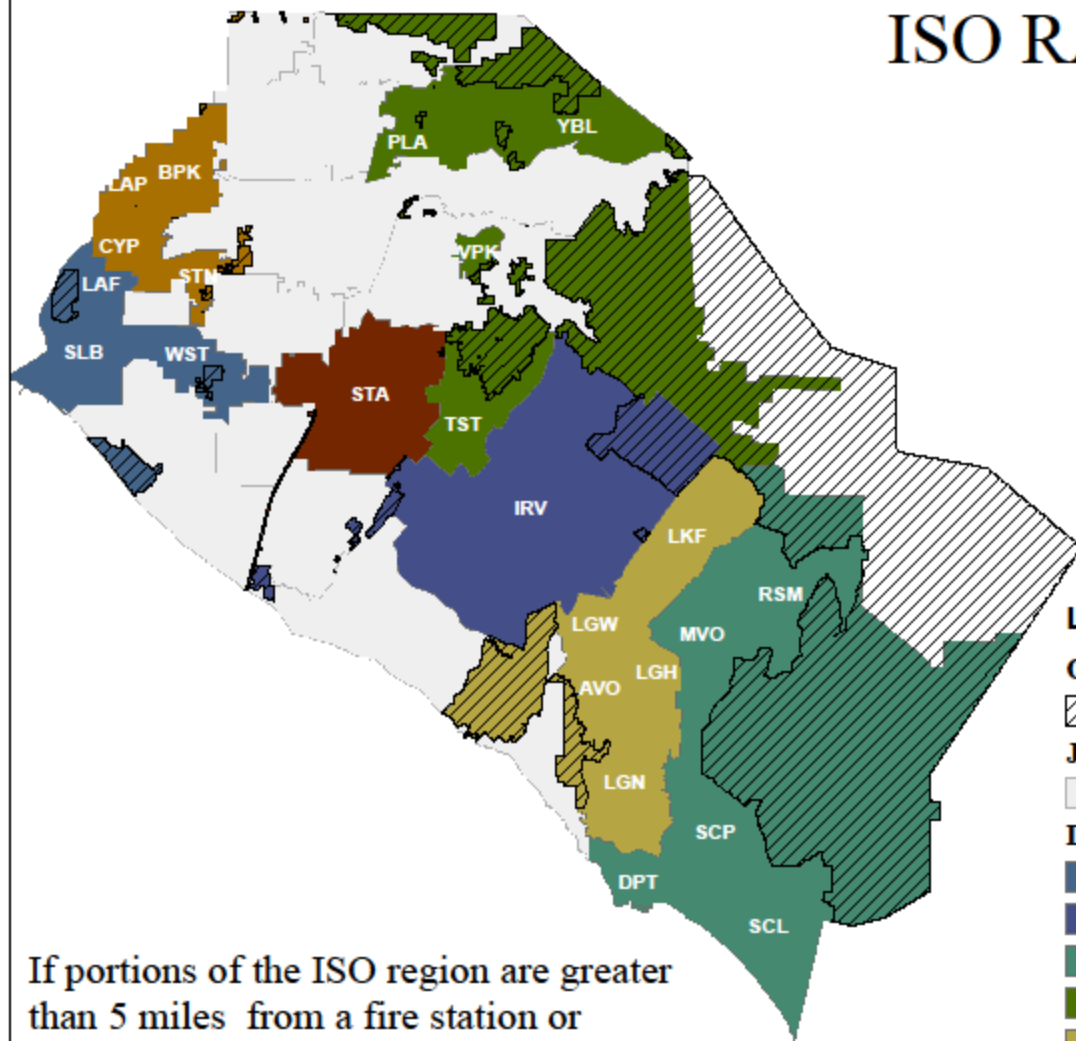
- Staff is seeking authorization to present proposal to City
- Pending City acceptance of Proposal, Staff will return to Board for approval of contract. The contract will be modeled after the Santa Ana and Garden Grove contract.



Questions?



ISO RATING MAP



Legend

ORC

UNINCORPORATED

Jurisdiction

NON-OCFA JURISDICTON

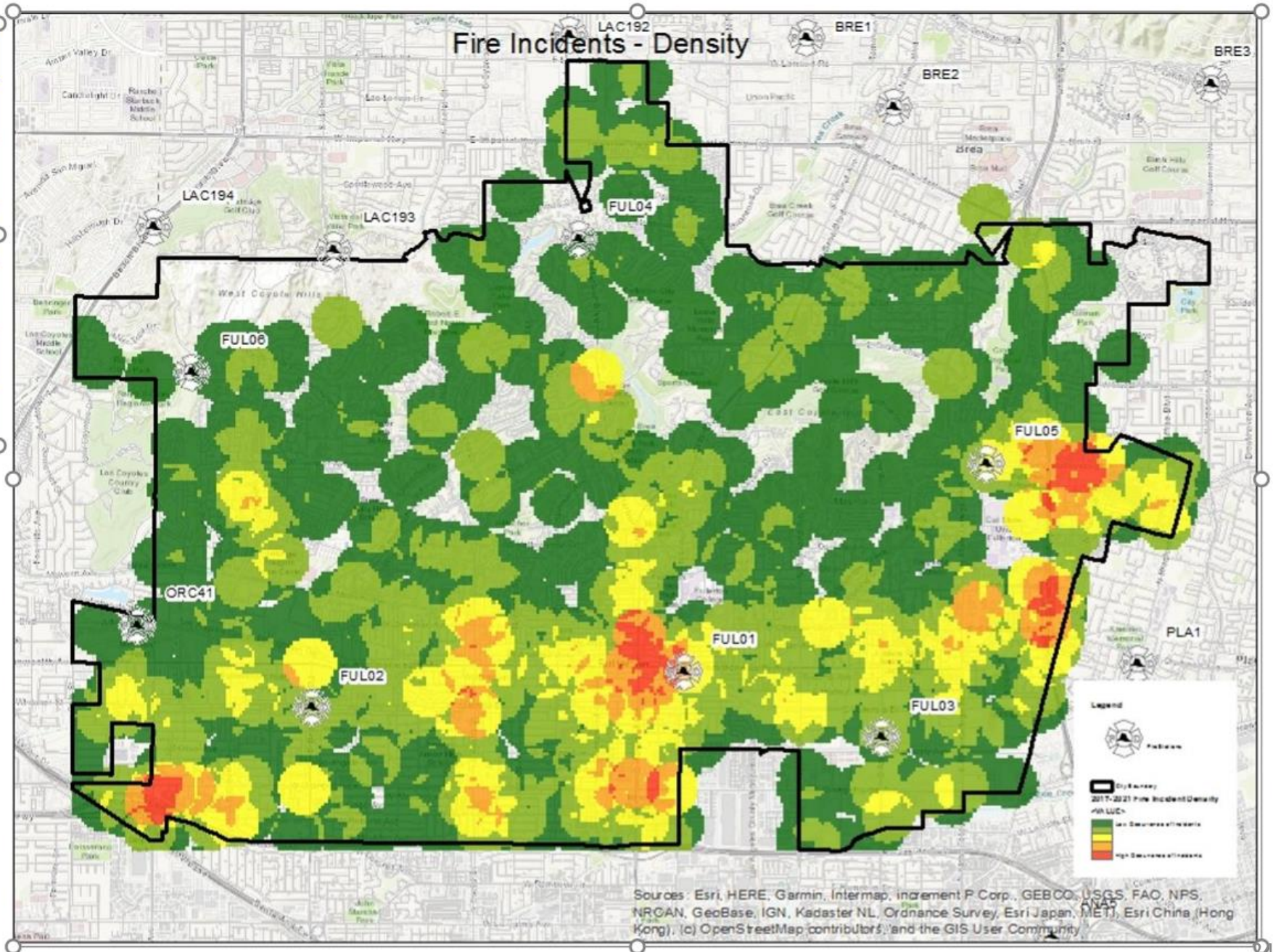
Division - ISO Protection Class Code

- DIVISION 1 - ISO 02
- DIVISION 2 - ISO 02/2X
- DIVISION 3 - ISO 03/3X
- DIVISION 4 - ISO 03/3X
- DIVISION 5 - ISO 03/3X
- DIVISION 6 - ISO 01
- DIVISION 7 - ISO 02

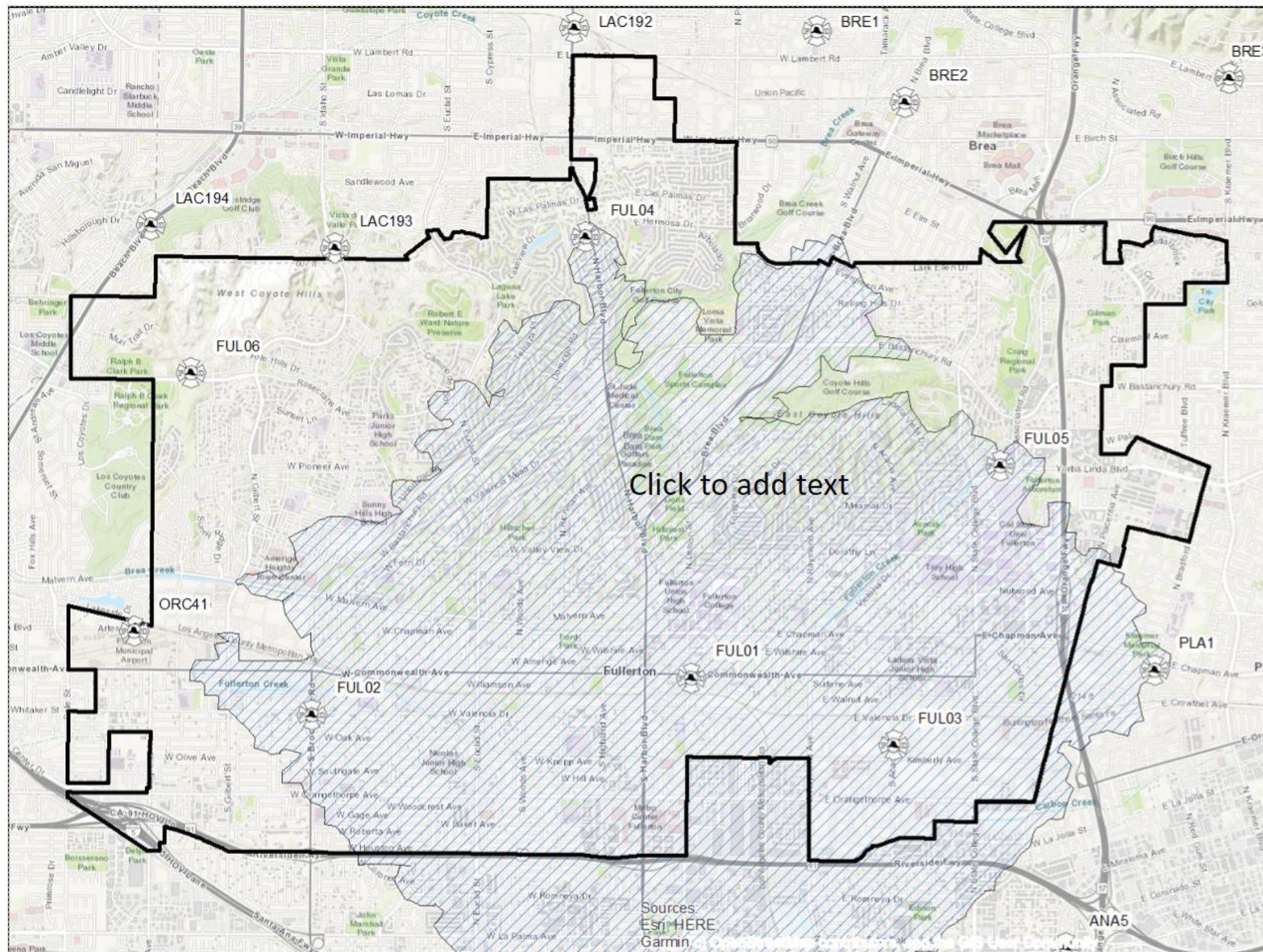
If portions of the ISO region are greater than 5 miles from a fire station or greater than 1,000 feet from a fire hydrant, then the rating is annotated with an "X".



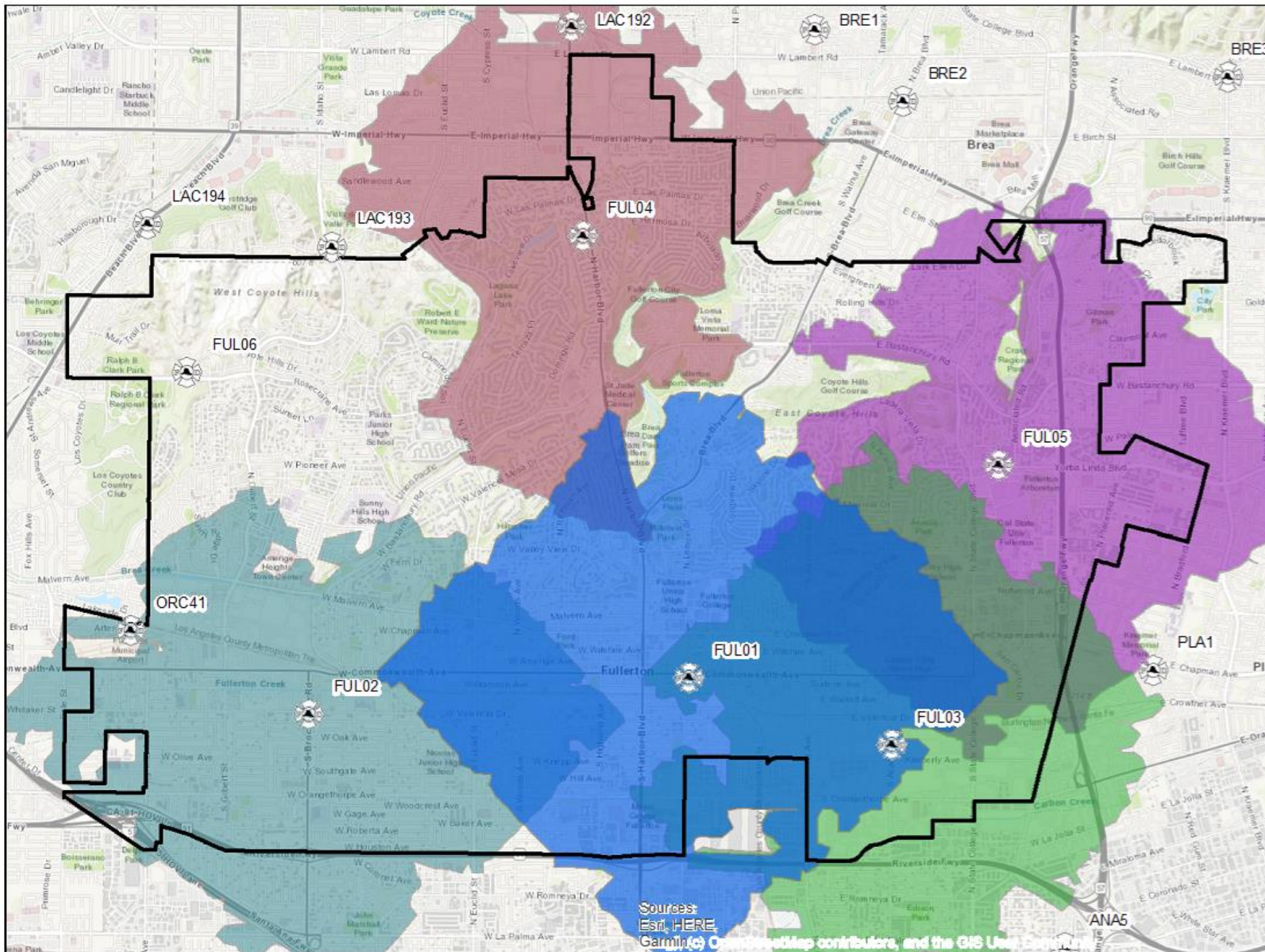
| Years | Incidents |
|-------|-----------|
| 2017 | 321 |
| 2018 | 306 |
| 2019 | 302 |
| 2020 | 373 |
| 2021 | 163 |
| Total | 1,465 |



Battalion Coverage (9 Min.)



ALS Response Area



Legend



Fire Stations



City Boundary



PME1 - 5 Min Travel



PME2 - 5 Min Travel



PME3 - 5 Min Travel

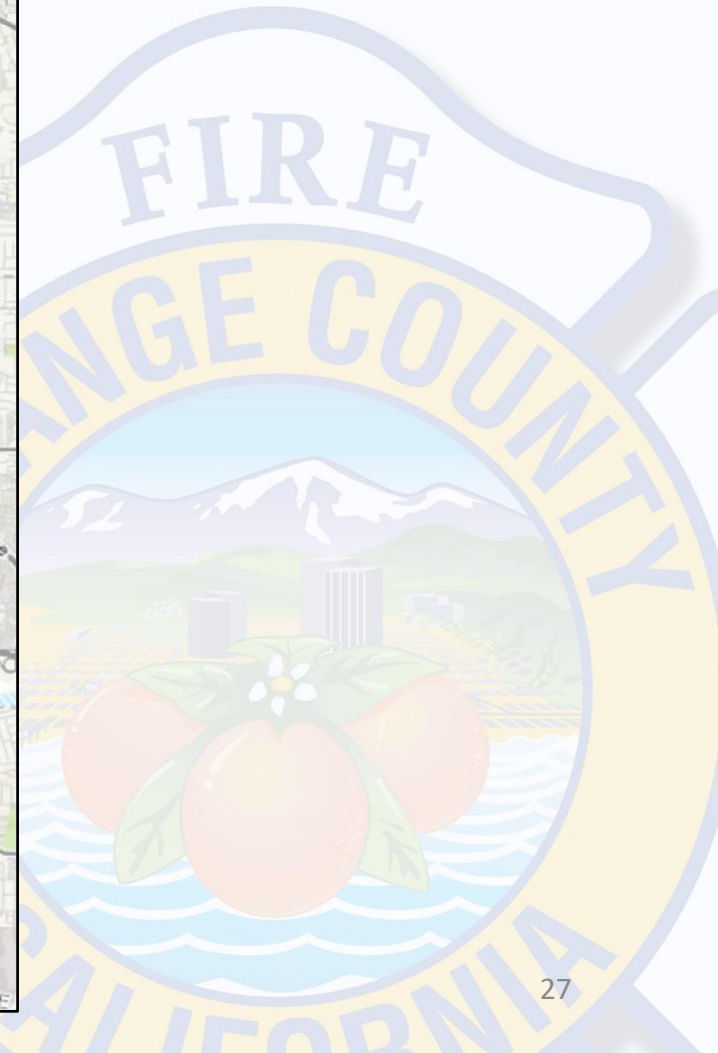
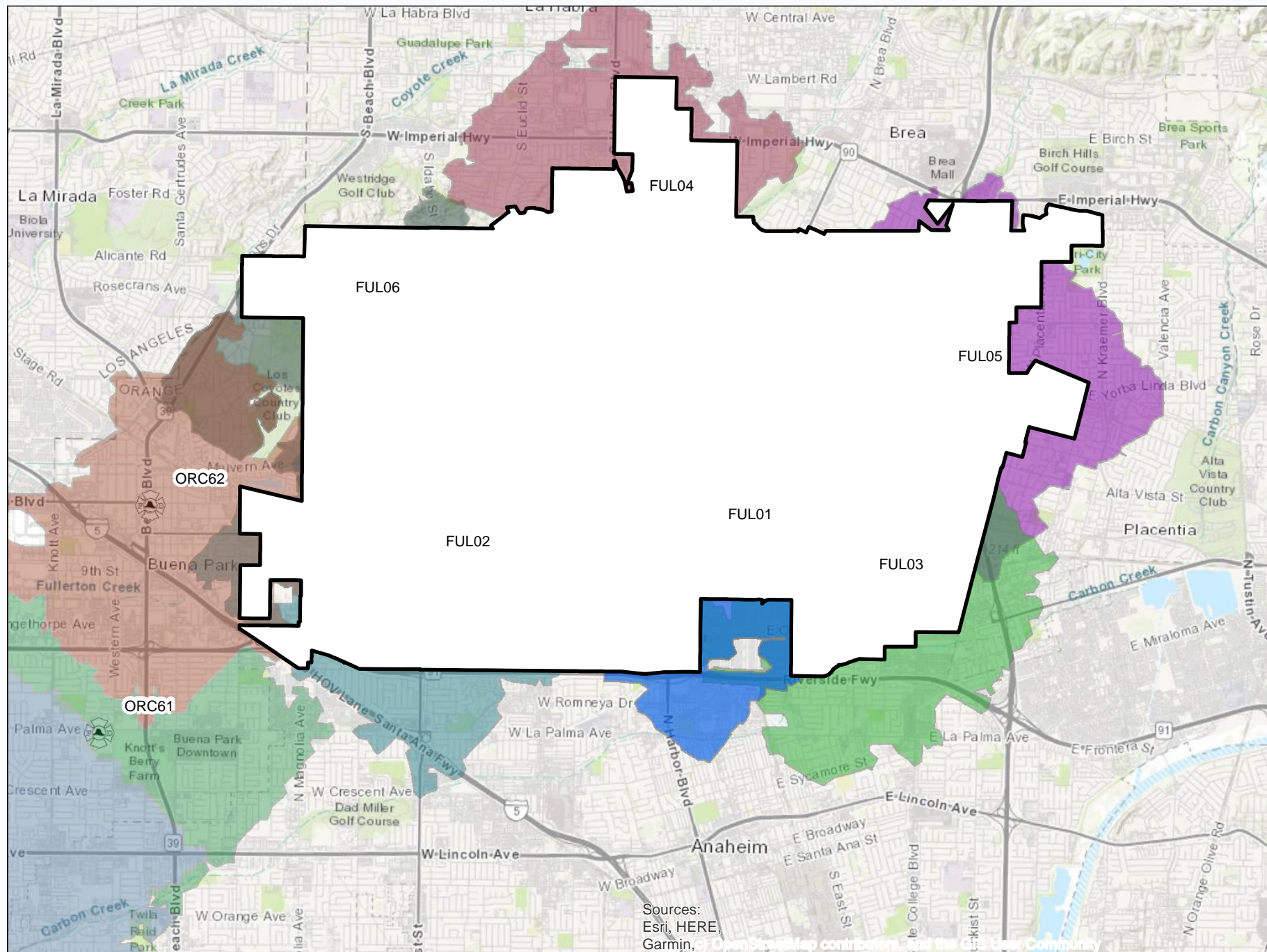


PME4 - 5 Min Travel

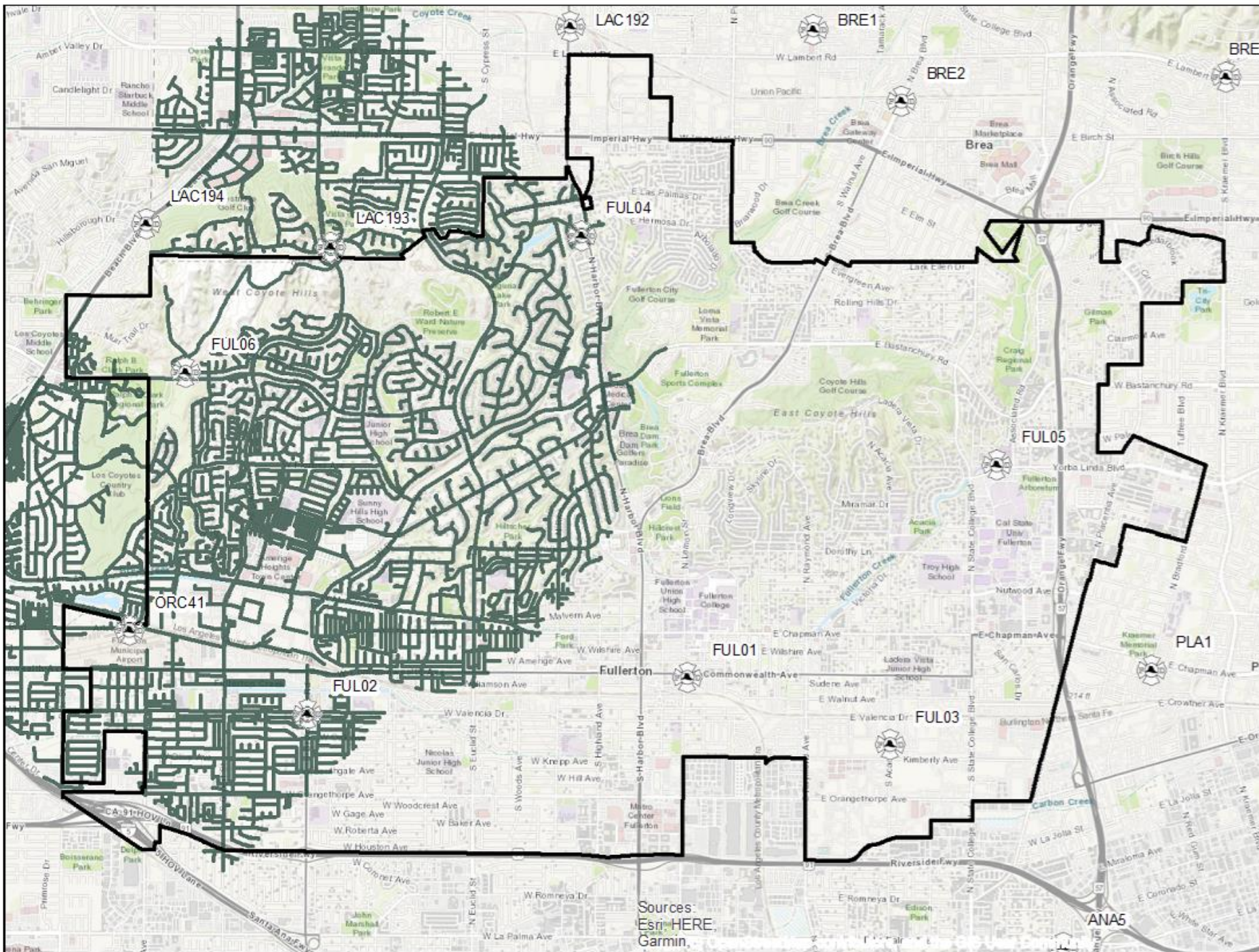


PME5 - 5 Min Travel

5 Minute ALS Regional Response with OCFA



Truck Response (9 Min.)



Legend



Fire Stations



City Boundary



T6 - 9 Min Travel

Sources:
Esri, HERE,
Garmin

Regional Truck Response
with OCFA

